



Co-funded by the
European Union

European law



All national judges and prosecutors within the EU are also European prosecutors and judges

They are the first ones responsible for the (correct) application of Eu-law and its instruments

Eu-law: too much, too difficult, too alien



- How to find your way ?
 - Where to start ?

Dutch Eurinfra-project



- Started in 2000
- Aim: to contribute to the correct application of European law
- Mentioned as ***best practice*** in European study
- Choice for Integrated Approach:
 - * Digital knowledge infrastructure and IT-tools
 - * Education and training in Eu-law (ECHR incl.)
 - * Network of Court-coordinators of European law (CCE), started in 2005

The Netherlands is subdivided in judicial regions for:

11 district courts

4 appellate courts



de Rechtspraak

maakt samen leven mogelijk

Rechterlijke indeling Nederland

Rechterlijke indeling

Rechtsgebied gerechtshof Amsterdam

- 1 arrondissement Amsterdam
- 2 arrondissement Noord-Holland

Rechtsgebied gerechtshof Arnhem-Leeuwarden

- 3 arrondissement Gelderland
- 4 arrondissement Midden-Nederland
- 5 arrondissement Noord-Nederland
- 6 arrondissement Overijssel

Rechtsgebied gerechtshof Den Haag

- 7 arrondissement Den Haag
- 8 arrondissement Rotterdam

Rechtsgebied gerechtshof 's-Hertogenbosch

- 9 arrondissement Limburg
- 10 arrondissement Oost-Brabant
- 11 arrondissement Zuid- en West-Brabant

april 2013





The district courts work on:

- * civil law matters (family law incl.)
- * criminal law matters
- * administrative law matters (tax law incl.)



The appellate courts work on:

- * Civil law matters (family law incl.)
- * criminal law matters
- * tax law matters

* For the remaining administrative law matters there are 3 separate higher specialized courts

Network of Court-coordinators European-law

- All these courts send at least one representative
- They gather at least twice a year
- They share information, actualities and best practices within the network
- They are the Eu-knowledge brokers to their own courts



Within his own court the CCE is expected:



- 1) to be the internal point of contact on matters of European law;
- 2) to signal and communicate interesting Eu-law developments;
- 3) to initiate further training where and when needed;
- 4) to be a *broker* on the knowledge of Eu-law in all aspects (administrative, tax, criminal and civil law) and therefore to stay in close contact with the several expert groups.

The idea of knowledge broker has lead to the
so-called

Europe-desk



in the Court of Appeal
in The Hague:



EUROPE-DESK

The Hague Court of Appeal in European perspective

Local Supervisor European Law (GCE): a.van.waesberghe@rechtspraak.nl

European civil (procedural) law

Legal field: European institutional law, European and uniform private law, ECHR, Charter of fundamental rights of the EU, international private law, international law, state immunity

Study group: Mrs. Roos (Ch), Van Dijk, prof. Stille, prof. Schaafsma, Boele, Van der Klooster

National intercourt coöperation: Group of experts in European Civil law (LOVC), Study group full judicial review in consumer law cases (LOVC), Eurogroup (Ch: HR)

Website: [Teamsite International and European law](#)

European tax law

Contact:

y.postema-van.der.koogh@rechtspraak.nl

Legal field: Treaty on EU, Treaty on the Functioning of the EU, Sixth VAT Directive, ECHR, International Covenant on civil and political rights, international social security, bi- and multilateral treaties on tax law

National intercourt coöperation: through this website: (www.samenwerken.rechtspraak.minjus.nl/sites/landelijk_belastingkammers)

European penal (procedural) law

Contact:

m.veldt-foglia@rechtspraak.nl

Legal field: ECHR, EU-law (Aliens Act etc.), Charter of fundamental rights of the EU

Study group: Mrs. Veldt-Foglia (Ch), Kaptein, Kuijer, Van Waesberghe

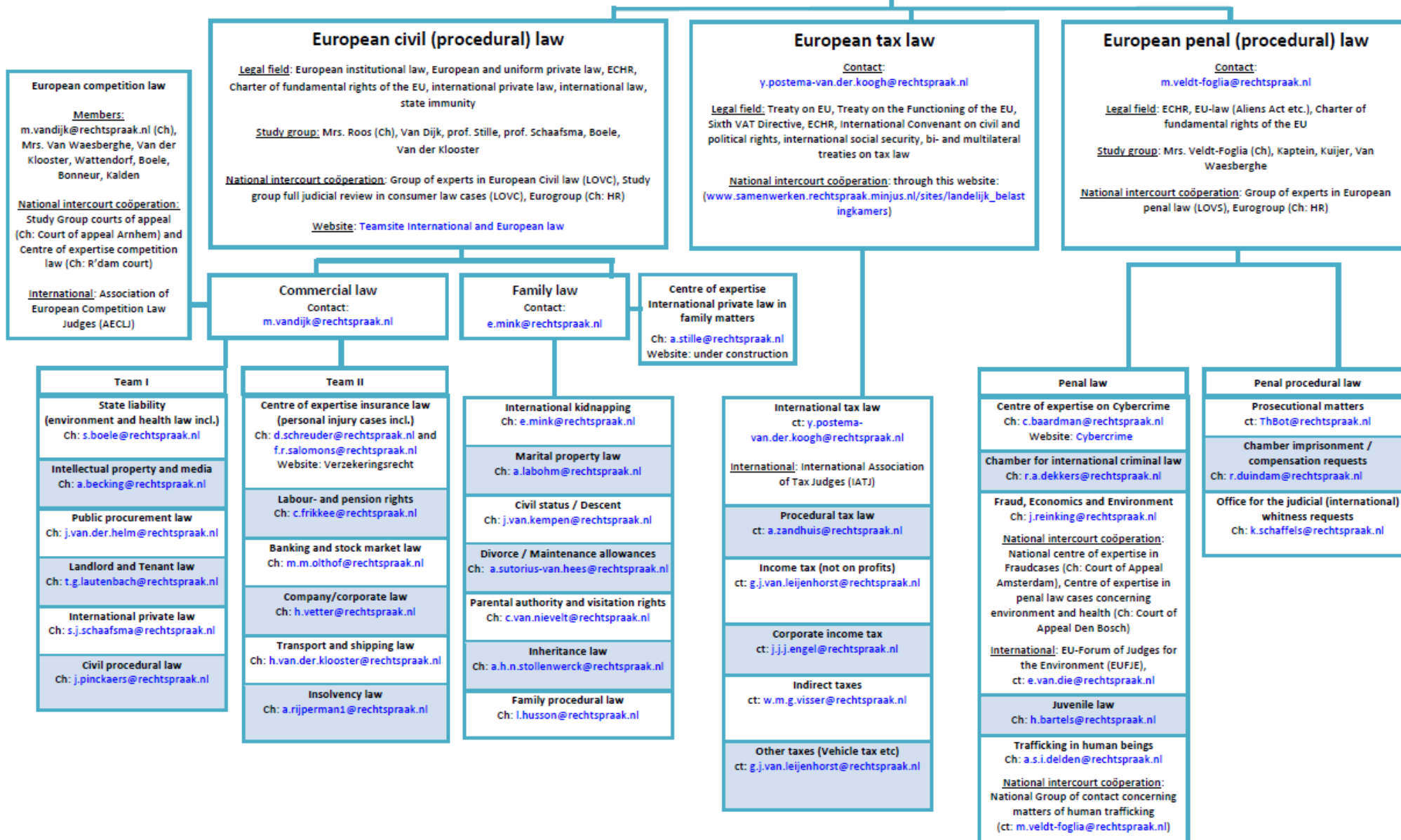
National intercourt coöperation: Group of experts in European penal law (LOVS), Eurogroup (Ch: HR)



EUROPE-DESK

The Hague Court of Appeal in European perspective

Local Supervisor European Law (GCE): a.van.waesberghe@rechtspraak.nl



Getting more by sharing



Our Europe desk is to be found on the Intro page of our court.

This page also contains a link to the national Portal European law.

This Portal gives access to all kind of actualities, newsletters, treaty's and directives, jurisprudence EU-court Luxembourg and ECHR Strassburg, pending prejudicial questions, literature etc on the field of EU- or European law.

THE END



Thank you for your attention

Exp: Mrs Amandine van Waesberghe

Justice in, and court coordinator European Law (CCE) of the Court of Appeal The Hague

Facts and Figures (2021)

- 17.4 million inhabitants in the Netherlands
- +/- 2.416 fte judges
- Total work force (including judges): 10.856 fte
- Caseload approx. 1.4 million

Age of Judges

Figuur 6 Leeftijdsopbouw rechterlijke ambtenaren 2021

